

## **Tecele Polipasto Prowinch c/carro electrico Monoviga 16 Tons trifasico**

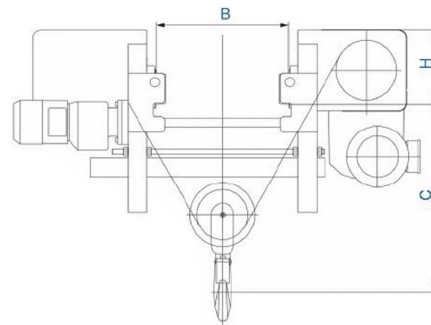
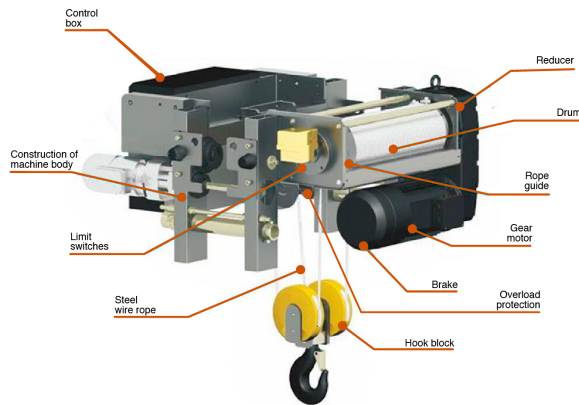


### **Características Esenciales**

- Equipo de Doble Velocidad, Mono viga. Servicio Heavy Duty H4/M5.
- Dispositivos de Límite de alta precisión, Protección de Sobrecarga y Protección térmica
- Componentes de alta calidad, Motor SEW Eurodrive, VDF Schneider, contactores Eaton/Schneider
- Estándares US y EC ASME HST-1 , ASME B30.16 , ASME B30.17 , EN14492-2 , EN60204-32.
- 3 Años de Garantía, Partes y Servicios Disponibles en América

## Especificaciones Técnicas

<b>Capacidad de Carga</b>	35200 lb / 16000 kg	<b>Voltaje del Control</b>	48V
<b>Altura de Izaje Estandar (Customizable)</b>	40 ft / 12 m	<b>Motor de Izaje</b>	Sew Eurodrive
<b>Velocidad /min</b>	1.9-13.1 ft / 0.6-4 m	<b>Reductor de Izaje</b>	Sew Eurodrive FA
<b>Numero de Velocidades</b>	2 Speed	<b>Hoist Contactor Brand</b>	Schneider or EATON
<b>Voltaje</b>	3 Phase 208~240/440~480V 50/60Hz	<b>Tipo Transmisión / Reductor</b>	Sew Eurodrive
<b>Potencia Total Watts</b>	2.6-16 kW	<b>Humedad</b>	<85%
<b>Clase de Servicio</b>	H4/M5/2m/Class D	<b>Temperatura</b>	-4°~104° F / -20°~40° C
<b>Tipo de Motor</b>	Squirrel Cage Induction Motor	<b>Potencia del Trolley</b>	0.75*2 kW
<b>Freno Motor</b>	Electromagnetic Release Brake >125%	<b>Nivel de Ruido</b>	82 dB
<b>Grado de Aislacion</b>	F	<b>Velocidad del Trolley /min</b>	16 ~ 65 ft/min. / 5 ~ 20 m/min
<b>Protección IEC Motor</b>	IP55	<b>Normas</b>	ASME HST-4 , ASME B30.16 , B30.17 , EN14492-2 , EN60204-32
<b>Protección Tablero de Control</b>	IP65	<b>Garantía</b>	3 Year
<b>Control</b>	Pendant Control and Optional Wireless F21		



**DRIVE TECHNOLOGY**  
SEW Eurodrive high performance Motor, reducer and brake. Compact design, light weight, low energy consumption, low noise and eco-friendly design. Electromagnetic brake disc (Asbestos-free). Long Service life and easy maintenance.



**OVERLOAD PROTECTION**  
Load Cell connected to a Limit Relay (Adjustable) to avoid overloading of the hoist.



**WIRE ROPE GUIDE**  
Helps the winding of the rope on the drum. Light weight and highly resistance. Design to reduce friction on the wire rope and avoid premature wear.



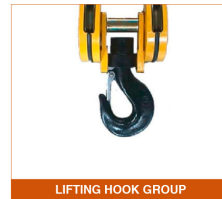
**HIGH-PERFORMANCE WIRE ROPES**  
High-performance wire rope with tensile strength up to 2160Mpa. Galvanized surface and high flexibility to ensure long service life.



**DRUM**  
Q345 steel, seamless grooved drum. Design to fulfill FEM and ASME standards and ensure a safe operation.



**LIMIT SWITCHES**  
High precision adjustable height limit switches, for all movements of hoist and trolley.



**LIFTING HOOK GROUP**  
DIN standard lifting hook with safety clasp. Forged by the high-strength material of T grade.



**CONTROL BOX**  
Electric Control box with Schneider Inverter, Eaton contactors and components. Compact design, easy access, IP65 Enclosure.

## Peso & Dimensiones

<b>H Altura Muerta</b>	920 mm
<b>A Altura Total</b>	1320 mm

Referential Images / Imágenes Referenciales  
Specifications may change without notice / las especificaciones pueden cambiar sin previo aviso